

PCN# 20130514000

Correct Notch Alignment on

MityARM-335X Family System on Modules

Date: May 14, 2013
To: Purchasing Agents

Dear Customer,

This is an initial announcement of a change to a product that is currently offered by Critical Link. The details of this change are on the following pages.

For questions regarding this notice, contact the Production Manager, Bill Halpin (bill.halpin@criticallink.com).

Sincerely,

Critical Link, LLC
Phone: (315) 425-4045
Fax: (315) 425-4048

PCN Number: 20130514000
PCN Date: May 14, 2013
Title: Correct Notch Alignment
Contact: Bill Halpin
Phone: (315) 425-4045
Ship Date: 03/01/2013

Overview

One change to the MityARM-335x modules is identified in the following section.

Change 1 – Notch Alignment

Description of Change

The PCB fabrication drawing was updated to provide tighter tolerance on location of center notch. In addition, a general cleanup of the drawings was also performed.

Figure 1 illustrates part of the drawing update.

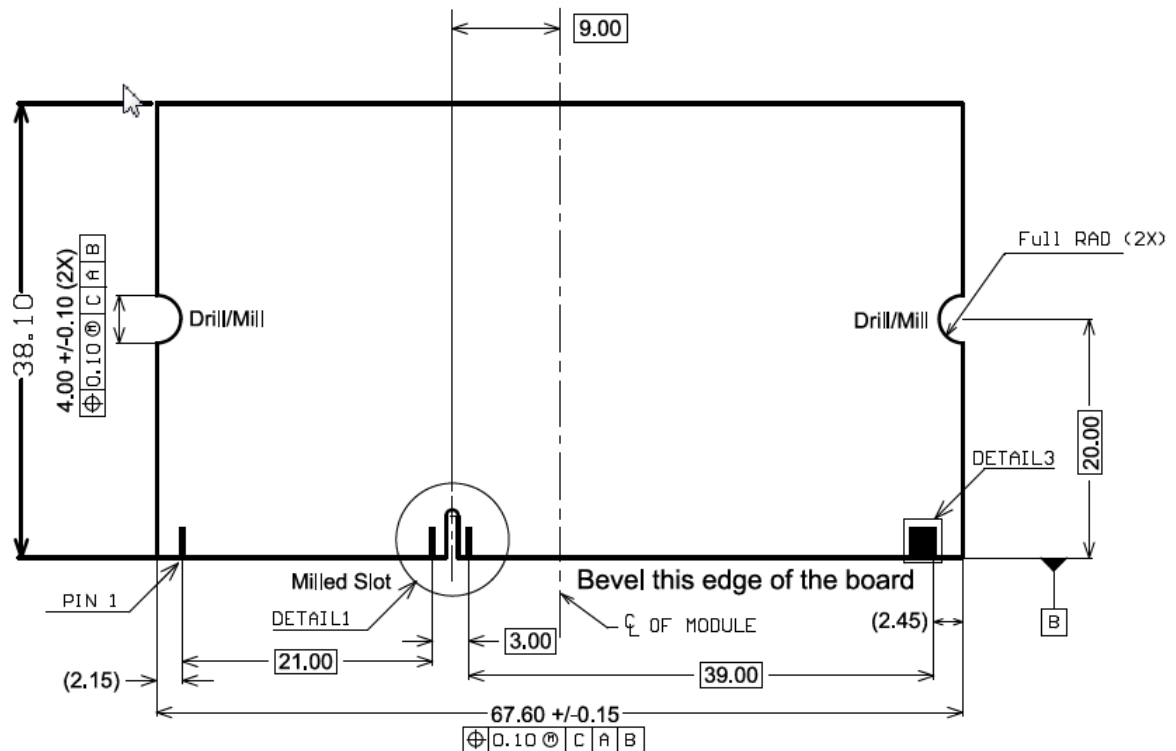


Figure 1 PCB 90-000166R-5A Drawing Update for Notch Alignment

Reason for Change

Analysis of production yield revealed misalignment of UUT edge connector with the test fixture connector was causing board test failures.

Anticipated Impact on Form, Fit, Function (positive / negative)

None.

Anticipated Impact on Quality or Reliability (positive / negative)

None.

Products Affected:

Details regarding the full printed circuit assembly (PCA) revision history can be located in the MityARM-335X Revision History section on the Critical Link support site.

Model Number	Current PCA	New PCA
3359-GX-227-RC-X	80-000444RC-2 RevA	Obsolete
3359-GX-226-RC	80-000509RC-1 RevC	80-000509RC-1 RevD
3359-GX-226-RL	80-000509RL-1 RevC	80-000509RL-1 RevD